



your fine art and antiques deserve our full attention

From precious pieces of fine art to priceless antiques, you will feel confident when you turn to the Arnoff family for more than 84 years of experience and excellence.

Packing Experts

We use only the finest, archival-quality materials

Custom Crating

Our on-site crating facility produces the highest quality crates to protect your artwork and withstand the rigors of transportation.

Air-Ride Transportation

All of our transport vans are equipped with shock-absorbing air-ride suspensions

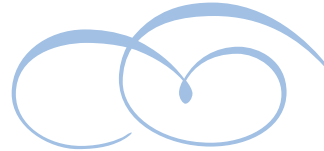
Climate Controlled Storage and Transportation

The proper temperature and humidity in our vans will protect your precious artwork.

Paintings • Flat Artwork
Sculptures – Indoor & Outdoor
Stone, Metal, Wood
Artifacts • Antiques
Framed Items

As an art carrier and member of the American Association of Museums, Arnoff has earned its reputation for professionalism, quality and care by serving such clients as:

Franklin D. Roosevelt Library & Museum
The Metropolitan Museum of Art
National Park Service
Vassar College
Stair Galleries
Sculptor Anthony Krauss

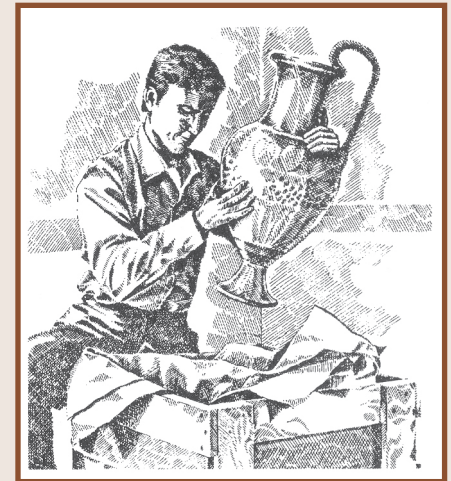


WITH LOCATIONS IN:

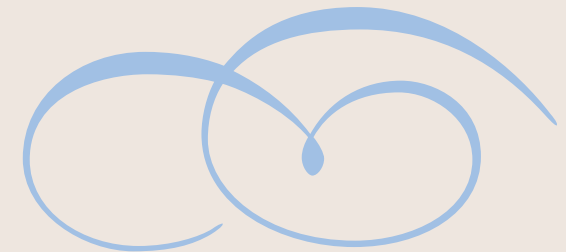
Lakeville, CT
Malta, NY
Millerton, NY
Poughkeepsie, NY
Ft. Pierce, FL

877-MOVE-ART
sales@arnoff.com
www.arnoff.com

an agent for



Handling • Transportation
Storage/Warehousing
Packing • Crating



845-471-1504
800-MOVE-ART
www.arnoff.com

relocation services

relocation team It takes more than a strong back to move sensitive items like fine art and antiques; it takes a team. The Arnoff team is made up of skilled, experienced, trained movers with the right equipment for the job.

planning The key to any successful relocation is planning. Our staff will work closely with you to plan every facet of your move from the methods used to the equipment required to any special concerns you may have.

equipment The vans used by Arnoff are designed and built to our own unique specifications. All are equipped with shock-absorbing air-ride suspensions to guarantee the smoothest ride possible for your valuable art and antiques. We also have units that are climate controlled to guarantee proper temperature and humidity.

training Every member of our team of moving professionals completes our own thorough training programs based on the recommendations of the National Gallery of Art, as well as the development programs offered by the American Association of Museums and by North American Van Lines.

ARNOFF

FINE ART SERVICE

crating Crating fine art so that it is safe and secure is an art in itself. Our skilled craftsmen, working in our own woodworking shop, custom design and build all the specialized crates we use to move valuable art and antiques. Our crate builders have decades of combined experience in their unique craft.

packing Years of experience with every kind of move have given our packing professionals the know-how to securely handle, pack, load, and wrap your artwork and antiques for travel across town or around the world. Acid free, static free and other specialized materials are employed to assure the finest quality packing service.



On-site crating of a sculpture of Ben Franklin, which was headed for restoration.

warehousing services

arnoff Fine Art Service has been securely storing and maintaining inventory control of valuable art objects and antiques since the 1920s. Our warehouses are safe, secure and climate controlled.

security Our warehouses are guarded around the clock and are equipped with direct alarm systems, closed-circuit television and motion detectors. Only a few specific management personnel have access to the storage areas. The construction of our buildings is brick and insulated steel. Each is equipped with a special dry sprinkler system.

environmental control

The warehouse temperature is maintained between 68 and 72 degrees, and the humidity is kept within 5 percent of 45 percent, the optimal humidity level; the building's temperature and humidity are monitored 24 hours a day.

the professional staff

Perhaps most important is that our state of the art facilities are staffed by professionals specially trained in storage practices. We keep abreast of each new improvement to equipment and techniques, and we conduct intensive training to keep our art handlers the best in the business.